

6

5

4

3

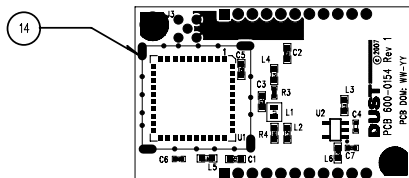
2

1

REVISION RECORD		
REV.	DESCRIPTION:	DATE:
X4	ORIGINAL CONCEPT	5/12/06
REV 1	Initial Release per ECO 569	7/06/08

TOP SIDE ASSEMBLY NOTES:

1. THE FOLLOWING COMPONENTS CAN BE POPULATED IN EITHER ORIENTATION:
ALL RESISTORS INDUCTORS AND NON-POLARIZED CAPACITORS
2. WATCH FOR POLARITY OR ORIENTATION MARKINGS ON THE FOLLOWING COMPONENTS:
U1, U2
3. FINISHED ASSEMBLY TO BE SHIPPED IN APPROVED ANTI-STATIC PACKAGING.
4. SQUARE PAD DENOTES PIN ONE OF CONNECTORS AND HEADERS.

TOP SIDE PARTS LEGEND, SILK SCREEN
TOP SIDE COPPER

		UNLESS OTHERWISE SPECIFIED, DIMENSIONS ARE IN INCHES: TOLERANCES ARE: FRACTIONS: DECIMALS: .XX ± .01 ANGLES: 0° 30" .XXX ± .005	APPROVALS	DATE	DUST NETWORKS			
			DRAWN BY: SWB	7-06 -08				
			CHECKED		TITLE: ASSEMBLY DRAWING, PCB, Cuyahoga,Strip, ROHS			
			ENGRG					
SEE ARENA		MATERIAL – SEE NOTES.	ISSUED		B	FSCM NO.	DWG NO.	REV.
NEXT ASSY	USED ON	FINISH – SEE NOTES.	CONTRACT NO.				700-0154	2
APPLICATION		DO NOT SCALE DRAWING			SCALE: NONE			SHEET 1 OF 1